



**2007
PRODUCT
GUIDE**

Spyderco

TIMELINE

- 1978** Sharpeners
- 1981** Kitchen Sharps, C01 Worker
- 1982** C02 Mariner
- 1983** C03 Hunter, C04 Executive
- 1984** C05 Standard, C07 Police Model
- 1987** C08 Harpy, C09 Co-Pilot
- 1988** 2001 Pre-Diver, 2002 Probe
- 1989** 3001 Mini Mariner, 3002 Spyderkey (Hummingbird), C07A Police Model (Aluminum), Embellishing by Yellow Horse on C03, C07 & C09, Embellishing by Santa Fe Stoneworks on C01, C04, C07 & C09
- 1990** C10 Endura, C11 Delica, C15 Bob Terzuola (Aluminum), C14 Rescue, LBK Ladybug, 2003 Mini Probe, C12 Civilian, 3001A Abalone Mini Mariner
- 1991** C13 Pro-Hunter (Pro-Venator), C16 Wayne Goddard, S001 Solo
- 1992** C07TI Police Model (Titanium), S002 Solo, C01BK Worker (Blak-Ti), C07BK Police Model (Blak-Ti), C17 Catcherman, C18 Wayne Goddard Jr., Embellishing by G. Blanchard on C07 & C13
- 1993** C01COM Evolution Edition, C21 Merlin, C01ATU Worker (TUFRAM), C20 Baby Wayne Goddard, C07SATU Police Model (TUFRAM), C26 Snap-It, C19 Bob Terzuola Jr. (Aluminum), C24 Black Hawk (Aluminum), Spyderco Laguiole
- 1994** C09SATU Co-Pilot (TUFRAM), C28 Dragonfly, C22 Michael Walker, C29 Cricket, C27 Jess Horn, C25 Frank Centofante Jr. (Aluminum), C15G Bob Terzuola (G-10), C19G Bob Terzuola Jr. (G-10), CK01 Cut Kit
- 1995** C23G Renegade (G-10), C24G Blackhawk (G-10), C30 Remote Release, C32 Spur, C33 Pro-Grip, S003 Solo (FRN), C03 Hunter (Modified), FB01 Bill Moran Featherweight, C34 Jess Horn
- 1996** C28 Dragonfly (Modified), C35 "Q", C36 Military Model, C37 Michael Walker Lightweight, C42 Howard Viele, C43 Delica II (Stainless Steel), C61 Pegasus, KX01 Kitchen Experimental I, KX02 Kitchen Experimental II
- 1997** C38 Jess Horn Lightweight, C40 Jot Singh Khalsa, C25 Frank Centofante Jr. (Modified), C47 Endura II (Stainless), C08G Harpy (G-10), C07G Police Model (G-10), C12G Civilian (G-10), C16BK Wayne Goddard Lightweight, C41 Native, C41 Native II (Stainless Steel), C29BK Cricket Lightweight, C62 Navigator, C05 Standard (G-10), C48 Tim Wegner, C49 Tim Wegner Jr., C52 Calypso Jr., C28 Dragonfly (Stainless Steel)
- 1998** C46 Bob Lum, C45 Rescue Jr., C45 Rescue Jr. (Stainless Steel), C39 Dyad Jr., C51 Rookie, LBKII Ladybug II, C10 Endura (New Model), C11 Delica (New Model), C14 Rescue (New Model), C14 Rescue (Stainless Steel), C54 Calypso, C53 Peter Herbst, C50 Frank Centofante
- 1999** T01 SpydeRench, MN07 Police Model Necklace, SC01 SpyderCard, C12SBK Matriarch, C12SGY Matriarch (Gray), C39 Dyad Jr. Lightweight, C41GPBL Blue G-10 Native, C52 Calypso Jr. Lightweight, C56 Tim Zowada, C57 D'Alton Holder Toad, C67 "R", 204MF Tri-Angle Sharpmaker (New Model), Carbon Fiber Series (Ladybug, Cricket, Dragonfly), C55 Starmate, C58 J.D. Smith, C59 Shabaria
- 2000** C10TR Endura Trainer, C11TR Delica Trainer, C44 Dyad, C60 Massad Ayoob, C63 James A Keating Chinook, C65 Bob Lum Chinese Folder, C66 Frank Centofante Vesuvius, C68 Bram Frank Gunting, C68TR Bram Frank Gunting Trainer, FB02 Bill Moran Drop Point, TC07 Police Model Tie Clip, CT02 Large Knife Stand, CT03 Small Knife Stand, The Spyderco Story
- 2001** C64 MeerKat, C66 Frank Centofante Vesuvius (Inlay and Bug), C69 Lil' Temperance, C71 Salsa, FB03 Lum Tanto, FB04 Fred Perrin, FB05 Temperance, FB05TR Temperance Trainer
- 2002** C72 Pride, C73 Ed Scott Impala, C75 Kiwi, FB08 SPOT, FB09 Ronin, FB10 Maddox, JBK Jester, T02 SpyderSaw, WTC Knife, 204 Diamond Triangles, 204UF Ultra Fine Triangles
- 2003** C07 Police Model (Carbon Fiber), C11 Delica (Carbon Fiber), C29 Cricket (Stainless Steel), C46BB Bob Lum Black Blade, C70 A.T.R., C77 SpyderHawk, C75SS Kiwi (Stainless Steel), C80 Dodo, JSS Jester (Stainless Steel), C78 Native III, C79 Assist I & II, C87 Scorpius, T02 SpyderSaw
- 2004** B01 SpyderFly, C14 93mm Rescue, C45 79mm Rescue, C52GY Gray Calypso Jr., C63 James A. Keating Chinook II, C70 A.T.R. (Stainless Steel), C71BK Salsa Black, C81 Para Military, C82 D'Allara Rescue, C83 Ed Schempp Persian Folder, C84 Warren Thomas Karambit, C85 Michael Janich Yojimbo, C88 Salt I, C91 Pacific Salt, FB12 Vagabond, FL01JFG Jester/Photon, FL01LFG Ladybug/Photon, KX05 Sashimi Knife, KX06P Wooden Handled Kitchen Utility Knife, KX06S Wooden Handled Kitchen Utility Knife
- 2005** C11LE Delica ZDP (Sprint Run), C08CF Carbon Fiber Harpy (Sprint Run), C22 Blue Almite Walker (Sprint Run), C36 Military (black blade), C41BBK Native Black Blade, C52LE Calypso Jr. ZDP (Sprint Run), C67 R2 (Sprint Run), C70 A.T.R. (black), C74 Ocelot, C81 Para Military (black blade), C89 Atlantic Salt, C90 Stretch, C92 Kopa, C93 Navigator, C94 UK Penknife, C94 DK Penknife, C95 Manix, C96 SpyKer, C97 Viele II, C98 Poliwog, C99 Volpe, C101 Manix 80mm, C102 Adventura, C104 Kris, C105 Persian 75mm, C106 Tasman Salt, K11WD Yin/Yang, B01RB SpyderFly Rainbow, B02 SmallFly, B03 SzaboFly, FB11 Kumo
- 2006** C09BK Almite CO-Pilot, C10BK Endura4, C11BK Delica4, C10GYW Endura Wave, C11GYW Delica Wave, C10FG Endura Foliage Green, C11FG Delica Foliage Green, C16BRG Wayne Goddard (Sprint), C30BK2 Remote Releasell, C36CFBG Military Model Carbon Fiber BG-42, C38BRG Jess Horn ZPD-189 (Sprint Run), C65BK Almite Chinese Folder (Sprint Run), C66-4 Centofante4, C75 Kiwi Red Bone, C82BK2 D'Allara Drop Point, C86 Spin, C112 Micro Dyad (Sprint Run), C113 Caly3, C103 P'Kal, C110 Lava, C111 Captain, KX06S/KX06P Yin & Yang Kitchen Knives, FB14 Swick (Sprint Run), FB16 Forester, FB17 Forager, FB18 Woodlander, FB19 Dayhiker

TABLE OF CONTENTS

CLIPIT FOLDING KNIVES	4
SALT SERIES KNIVES	26
BALISONG/BUTTERFLY KNIVES	28
FIXED BLADE KNIVES	30
KITCHEN KNIVES	34
SHARPENERS	36
ACCESSORIES	40
EDGE-U-CATION	44
WARRANTY	46
STEEL ELEMENT	47
PATENTS AND TRADEMARKS	49
KNIFE SPECIFICATIONS	62
STEEL CHART	64

BYRD TABLE OF CONTENTS

CARA CARA	53
MEADOWLARK	53
ROBIN	56
FINCH	57
STARLING	57
FLIGHT	58
PELICAN	58
CROSSBILL	58
RAVEN	59
CROW	59
FIREBYRD	60
8TOOL HARP	60
ACCESSORIES	61



Clipits





Our folders predominantly have pocket clips, we call them Clipits. In the early 1980s Spyderco was the first production knife company to put a clip on a folder. Clips shifted the knife's weight from the bottom of a pant's pocket to the top and carried it inside a pocket so it sat/rode flat regardless of size. Over time Spyderco buyers started correlating the name with quality, reliability, sharpness out of the box and innovation. Today when people refer to Clipits they are also describing their highly developed cutting performance and the fact there is a trademark Spyderco Round Hole for one-hand opening/closing the blade.



C10BK

C11BK



C10PGYW

C11PGYW

NEW!

C10BK ENDURA4 C11BK DELICA4 LIGHTWEIGHT

At the heart of Spyderco's Clipit line sits the Delica and Endura. Initially designed as lightweight alternatives to heavier stainless models, both folders rank as best-sellers for going on two decades.

- ▶ 4-way clip: Tip up/down, left/right hand
- ▶ Screw together construction
- ▶ Skeletonized steel internal liners
- ▶ Phosphor bronze bushings
- ▶ FRN Volcano Grip™ handle
- ▶ David Boye Dent
- ▶ Flat saber-ground blade

C10PGYW ENDURA C11PGYW DELICA WAVE

Delica and Endura with the Ernest Emerson patented Wave feature that opens the blade as you deploy the folder from a front pant's pocket.

- ▶ 4-way clip: Tip up/down, left/right hand
- ▶ Screw together construction
- ▶ Skeletonized steel internal liners
- ▶ Phosphor bronze bushings
- ▶ Charcoal Gray FRN Volcano Grip™ handle
- ▶ David Boye Dent
- ▶ Flat saber-ground blade





NEW!

**C10FG ENDURA
C11FG DELICA
FOLIAGE GREEN**

Shade shifting green-gray handle matches the green background of the U.S. Army's Digital Camo, blending into its surroundings indoors or out.

- ▶ 4-way clip: Tip up/down, left/right hand
- ▶ Screw together construction
- ▶ Skeletonized steel internal liners
- ▶ Phosphor bronze bushings
- ▶ Foliage Green FRN Volcano Grip™ handle
- ▶ David Boye Dent
- ▶ Flat saber-ground blade

**C10GRE ENDURA
C11GRE DELICA
ZDP-189**

NEW!

Solid ZDP-189 steel blade is the hottest, hardest and highest performing steel in the knife industry today.

- ▶ 4-way clip: Tip up/down, left/right hand
- ▶ Screw together construction
- ▶ Skeletonized steel internal liners
- ▶ Phosphor bronze bushings
- ▶ British Racing Green FRN Volcano Grip™ handle
- ▶ David Boye Dent
- ▶ Flat saber-ground blade



C10TR ENDURA C11TR DELICA TRAINERS

Designed to teach opening/closing skills, actions and drills without the fear or consequence of meeting a sharpened edge.

- ▶ 4-way clip: Tip up/down, left/right hand
- ▶ Screw together construction
- ▶ Skeletonized steel internal liners
- ▶ Phosphor bronze bushings
- ▶ Red FRN Volcano Grip™ handle
- ▶ David Boye Dent
- ▶ Non-sharpened blade

C10 ENDURA C11 DELICA STAINLESS STEEL

Steel-handled knives offer enough weight and solidity to reassure you they're in your pocket ready for use.

- ▶ 4-way clip: Tip up/down, left/right hand
- ▶ Phosphor bronze bushings
- ▶ Stainless Steel handle
- ▶ David Boye Dent
- ▶ Flat saber-ground blade
- ▶ Stainless handle suitable for engraving or embellishment



C07 POLICE MODEL

A five-star efficient design with the handle and blade same-sized, allowing as much blade length possible in the smallest, thinnest package.

- ▶ Right hand, tip-down clip
- ▶ David Boye Dent
- ▶ Weight reducing spine swedge
- ▶ Hollow-ground blade
- ▶ Stainless handle suitable for engraving or embellishment

C08 HARPY

Commercial fishermen depend on Hawkbill blades because their curve severs marine rope, line and netting in a downward cutting motion, safely and at arm's length. Arcing tip holds what you're cutting in contact with the sharp edge, keeping it from

slipping off the tip.

- ▶ Right hand tip-down clip
- ▶ Handle drying vent
- ▶ David Boye Dent
- ▶ Hollow-ground blade

C12 CIVILIAN

Reverse "S" blade was engineered at the request of a U.S. law enforcement agency for their agents. Three cutting surfaces: One on the curved portion of the belly, another inside the S's curve and one at the tip's hook. *Blade shape and tip are not recommended for general utility or everyday use/carry.

- ▶ Right-hand, tip-down clip
- ▶ G-10 handle
- ▶ Micro-thin tip
- ▶ Patented reverse "S" hollow-ground blade



C14 RESCUE 93MM

The Rescue Model is an essential piece of rescue equipment for Save & Serve professionals. Rounded Sheepfoot blade slides under clothing, rope and bindings for safeguarded cutting without a sharp point.

- ▶ Ambidextrous, tip-up clip
- ▶ David Boye Dent
- ▶ Flat, saber-ground Sheepfoot blade with PlainEdged tip (for wire stripping)
- ▶ 14mm Spyderco Round Hole
- ▶ FRN Volcano Grip handle
- ▶ Blue version has PlainEdge tip. Black is fully serrated.

C45 RESCUE 79MM

Two-thirds sized version of the Rescue ergonomically designed for smaller hands and compact performance.

- ▶ Ambidextrous, tip-up clip

- ▶ David Boye Dent
- ▶ Flat, saber-ground Sheepfoot blade
- ▶ 14mm Spyderco Round Hole
- ▶ FRN Volcano Grip handle
- ▶ Available: black or safety orange

C79 ASSIST

Curves on blade and handle position fingers for scissoring/trimming rope or line. Squeezing the closed-blade into the handle exposes a retractable carbide glass breaking tip (replaceable). Handle houses a survival whistle. Patented blunt tipped blade lifts and pries.

- ▶ Ambidextrous tip-up clip
- ▶ David Boye Dent
- ▶ Bi-Directional Textured® three-dimensional FRN handle
- ▶ Cobra Hood™
- ▶ Hollow-ground blade



C28BK DRAGONFLY LIGHTWEIGHT

The Dragonfly might be a diminutive folder but it cuts and feels like a larger one. Ergos are enhanced with a forefinger choil and a spine cusp.

- ▶ Right hand integral tip-up clip
- ▶ FRN Volcano Grip handle
- ▶ David Boye Dent
- ▶ 11mm Spyderco Round Hole
- ▶ Leaf-shaped flat-ground blade

C28 DRAGONFLY STAINLESS

Equivalent features to the Dragonfly lightweight with a fully stainless handle.

- ▶ Right hand tip-up clip
- ▶ Stainless handle suitable for engraving or embellishment
- ▶ David Boye Dent
- ▶ 11mm Spyderco Round Hole

- ▶ Leaf-shaped flat-ground blade
- ▶ Stainless handle suitable for engraving or embellishment
- ▶ New etched stainless handle option **NEW!**

C29 CRICKET STAINLESS

Oval shape carries lightly and simply anywhere on your person. Chris Reeve inspired Integral Lock utilizes the back handle scale as the lock's liner keeping the knife slim with few moving, wearable parts.

- ▶ Right hand tip-down clip
- ▶ Use as a money clip or tie tack
- ▶ Hollow-ground blade
- ▶ David Boye Dent
- ▶ Stainless handle suitable for engraving or embellishment
- ▶ New etched stainless handle option **NEW!**



C30BK2 REMOTE RELEASE 2

Rapid-release spring loaded shackle attaches above or below waist-level to a belt-loop, PFD (personal flotation device), carabineer, harness, even bootlaces. Shackle is positioned near the Spyderco Round Hole letting you unhook and open the folder without needing to rotate the knife in hand.

- ▶ Spring loaded shackle clip
- ▶ FRN Volcano Grip handle with slip-free Kraton® inlay
- ▶ 14mm Spyderco Round Hole
- ▶ Flat-ground blade



C81 PARA MILITARY

A two-thirds sized version of the Military Model. Nested Compression Lock® rated for hard-use.

- ▶ Made in Golden, Colorado
- ▶ Right hand tip-down clip
- ▶ Nested Compression Lock®
- ▶ G-10 handle scales
- ▶ Spine and choil jimping
- ▶ 14mm Spyderco Round Hole
- ▶ Modified clip-point blade

C81BK BLACK PARA MILITARY

Para Military Model with black-DLC coated blade



C36

C36BK

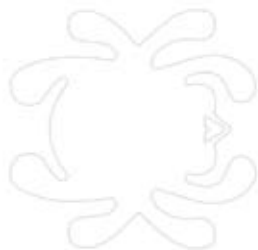
C36 MILITARY MODEL

The Millie represents all that is Spyderco: CPM-S30V premium blade steel, ergonomically expanded lightweight G-10 handle, open-ended construction for cleaning and lubricating. Fail-safe performance everyday, every time.

- ▶ Made in Golden, Colorado
- ▶ Right hand tip-down clip
- ▶ Nested LinerLock®
- ▶ G-10 handle scales
- ▶ Spine and choil jimping
- ▶ Screw construction
- ▶ 14mm Spyderco Round Hole (for use with gloves)
- ▶ Modified clip-point blade

C36BK BLACK MILITARY MODEL

Military Model with black-DLC coated blade





C41BK NATIVE LIGHTWEIGHT

Two indents maximize control while minimizing fatigue. Indent closest to the blade positions the index finger nearer the cutting edge, the second holds the middle finger on the handle letting you choke up on the edge when making pushing/pulling cuts.

- ▶ Made in Golden, Colorado
- ▶ Ambidextrous tip-up clip
- ▶ David Boye Dent
- ▶ Weight reducing spine swedge-grind with spine jimping
- ▶ Bi-Directional® Textured FRN handle
- ▶ Hollow-ground blade

C41BKK BLACK NATIVE LIGHTWEIGHT

Native Lightweight with black DLC coated blade.

C41 NATIVE STAINLESS

Pinch-free chamfered stainless handle with dual finger indents for control and comfort.

- ▶ Ambidextrous tip-up clip
- ▶ Weight reducing spine swedge grind with spine jimping
- ▶ Hollow-ground blade
- ▶ Stainless handle suitable for engraving or embellishment

C78 NATIVE 3

Same two-indent control feature but with a lightweight handle covered in smooth and textured spots that generate tactile slip resistance in the hand.

- ▶ Ambidextrous tip-up clip
- ▶ Weight reducing spine swedge grind with spine jimping
- ▶ David Boye dent
- ▶ FRN handle
- ▶ Hollow-ground blade



C63 CHINOOK 3 **BY JAMES KEATING**

James A. Keating is a Master-At-Arms and a venerated knife designer. His Chinook has a robust hard-use lock for blocking, passing and strenuous cutting.

*2007 improvements include jimpping on spine and choil, and a full flat-ground blade.

- ▶ Made in Golden, Colorado
- ▶ Ambidextrous tip-up/tip-down clip
- ▶ G-10 handle with full-length steel liners and skid-free expansions
- ▶ Full flat-ground modified Bowie blade



C66-3 CENTOFANTE3 **BY FRANK CENTOFANTE**

Frank Centofante understands knives and knifemaking, and sat as President of the Knifemaker's Guild for many years. Spyderco offers two Frank C. collaborations. Both have fluted textured handles with a silver inlay Spyderco bug.

- ▶ Right hand tip-up/tip-down clip
- ▶ David Boye Dent
- ▶ FRN handle
- ▶ Spine has a swedge-grind and jimpping
- ▶ Hollow-ground blade

C66-4 CENTOFANTE4 **BY FRANK CENTOFANTE**

Modified Wharncliffe blade profile.



Production
Prototype
Pictured

C74 OCELOT BY TIM WEGNER

Tim Wegner's Ocelot goes from office to field. Full-bellied blade is thick for outdoor tasks with a fully steel lined slip-resistant handle covered with paw print (pug) texturing. Gold bug appliqué.

- ▶ Ambidextrous tip-up/tip-down clip
- ▶ David Boye Dent
- ▶ Full steel liners
- ▶ Hollow-ground blade

C75 KIWI

Hole-to pivot position makes opening/closing the Kiwi smooth as glass. Dressy mother-of-pearl and abalone inlays and stainless bolsters.

- ▶ Clipless
- ▶ Stainless handle with pearl/and abalone inlays and steel bolsters

C82

- ▶ One finger indent
- ▶ Wharncliffe hollow-ground blade
- ▶ Suede carrying case

C82 D'ALLARA DROP POINT

NYPD Officer John D'Allara perished in the World Trade Center on 9/11. An avid Spyderco collector, in memoriam we designed and named a knife for him. Blade is evenly thick from heel to tip with a 3-D steel-lined handle and Ball Bearing Lock®.

- ▶ Ambidextrous tip-up wire clip
- ▶ Bi-Directional® Textured FRN handle
- ▶ 14mm Spyderco Round Hole
- ▶ Hollow-ground drop-point blade



C86 SPIN

Designed by Eric Glesser, our smallest Clipit has a less-than-2-inch blade with a stylish workhorse attitude. Chris Reeve style Integral LinerLock and laser engraved spider web.

- ▶ Right hand tip-down clip
- ▶ Wharncliffe hollow-ground blade
- ▶ Use as a tie clip, money clip or jewelry item
- ▶ New etched stainless handle option

NEW!

C87 SCORPIUS

Form follows function explains the appearance of the urban utility Scorpius. Wavy handle offers multi-positional expansions letting you choke up nearer the blade or grip the handle further back.

Production
Prototype
Pictured

- ▶ Right hand tip-up / tip-down clip
- ▶ David Boye Dent
- ▶ 14mm Spyderco Round Hole
- ▶ Hollow-ground blade

T02 SPYDERSAW

Japanese offset saw-teeth eat through wood, fibrous and organic material making it an indispensable tool for paddlers (strainers) hunters, campers and gardeners.

- ▶ Integral right hand tip-up clip
- ▶ David Boye Dent
- ▶ FRN Volcano Grip handle



C95

C101

C95 MANIX

A fistful of folder with dual skel-etonized and nested steel liners and a forefinger choil so the closer you grip to the cutting edge the more control you have over the cut.

- ▶ Made in Golden, Colorado
- ▶ Ambidextrous tip-up/tip-down clip
- ▶ 14mm Spyderco Round Hole
- ▶ G-10 handle
- ▶ Spine jimping
- ▶ Enlarged lanyard hole
- ▶ Full flat-ground blade

C101 MANIX 83MM

A smaller-stature Manix with equal operational excellence.

C98 POLIWOG

Ambidextrous open-ended Ball Bearing Lock™ unlocks by pulling back on the ball. Larger than the blade, the curved handle with indents fits any sized hand for fatigue-free manipulative cutting.

- ▶ Ambidextrous tip-up clip
- ▶ Handle cutouts lessen weight
- ▶ Ball Bearing Lock®
- ▶ Hollow-ground blade with spine swedge



C98





C99 VOLPE

Fox Cutlery of Italy manufactures the Volpe, which translates to Fox in Italian. Stainless handle is overlaid with olivewood and has a Chris Reeve Style Integral Lock with a laser-cut silhouette bug.

- ▶ Right hand tip-down clip
- ▶ Screw construction
- ▶ Spine swedge grind
- ▶ Spine dip positions index finger on the spine
- ▶ Flat-ground blade

C102 ADVENTURA BY ALEXANDRU DIACONESCU

Techie, futuristic and fastidiously engineered by Romanian Technical Manager Alexandru Diaconescu. Slots in both blade and stainless handle diminish weight, allowing a glimpse of

internal components and locking mechanism.

- ▶ Ambidextrous tip-up/tip-down clip
- ▶ David Boye Dent
- ▶ Spine jimping
- ▶ Hollow-ground blade with unsharpened spine swedge

C103 P'KAL

Pikal is a martial arts genre and folder design that carries in reverse grip with the edge facing inward toward the user. Removable Emerson Wave catches the pocket's edge when drawing the knife, opening blade in the same motion.

- ▶ Ambidextrous tip-up clip
- ▶ Patented encased Ball Bearing Lock®
- ▶ Screw construction
- ▶ Flat-ground blade
- ▶ Made in Golden, Colorado

NEW!



C104

C104 KRIS

BY ED SCHEMPP

Civilizations, ancient and modern, have cutlery styles representing their culture, ethnicity and cutting requirements of their time. Kris blades represented a Moro (Philippine) man's societal standing, provided talismanic benefits and defense. Curvy blade in essence creates an edge with oversized serrations.

- ▶ Right-hand, tip-up clip with gold bug appliqué
- ▶ David Boy Dent
- ▶ Micarta handle with steel bolsters is curved for gripping options
- ▶ Hollow-ground blade with gold bug logo



C105

C105 PERSIAN 75MM

BY ED SCHEMPP

Persian blade sweeps upward to a fine tip. Protracted finger choil places and keeps the fingers just behind the cutting edge. Eastern influence meet western technology.

- ▶ Right-hand, tip-up clip with gold bug logo
- ▶ David Boy Dent
- ▶ Micarta handle with steel bolsters
- ▶ Hollow-ground blade with gold bug logo

NEW!

C109SL

C109BK

C108

NEW!

Production
Prototype
Pictured

Production
Prototype
Pictured

C108 BI-FOLD

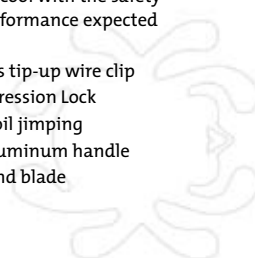
BLADE Magazine awarded the Bi-Fold "Most Innovative Imported Knife of 2006". It folds like a book with the lock-lever inside the hole. Depressing the lever permits the blade to open and positions the index finger through the Perrin index finger hole for complete retention and control. Jimping at the spine and bottom keep everything slip free. Interesting, innovative and functional.

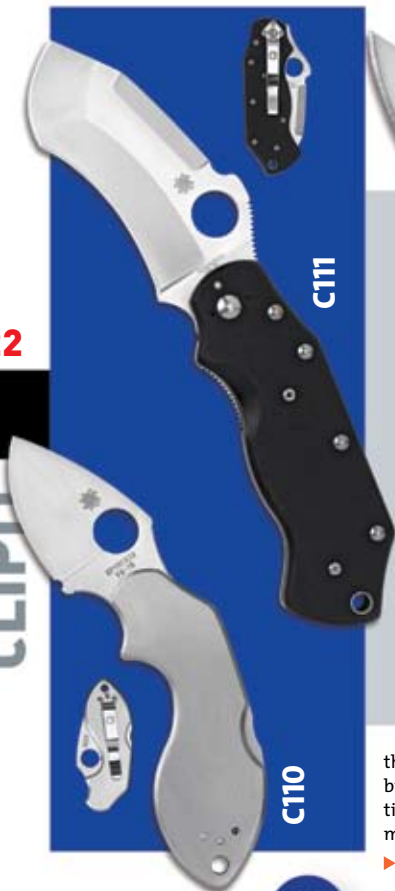
- ▶ Right hand tip-down clip
- ▶ Manual backup safety
- ▶ Spine and choil jimping
- ▶ Blade and handle cutouts reduce weight
- ▶ Flat-saber ground blade

C109SL "S" SLIVER C109BK "S" BLACK

The "S" blade is made using MIM (metal injection molding) technology and paired with a web-cut aluminum handle. Only two ounces, it's an eyeful of cool with the safety and cutting performance expected from Spyderco.

- ▶ Ambidextrous tip-up wire clip
- ▶ Nested Compression Lock
- ▶ Spine and choil jimping
- ▶ Anodized aluminum handle
- ▶ Full flat-ground blade





C110 LAVA BY CHAD LOS BANOS

Corrections Officer Chad Los Banos designed the Lava so it “doesn’t force the hand to fit the knife but the knife conforms to any size hand”. Cutting edge sits lower than the index finger and the curved handle with deep choil and indent bump leverage and lessen fatigue.

- ▶ Ambidextrous tip-up clip
- ▶ Spine and choil jimping
- ▶ David Boye Dent
- ▶ Flat-ground blade
- ▶ Stainless handle suitable for engraving or embellishment

NEW!

C111 CAPTAIN BY JASON BREEDEN

The Captain has opposing cutting angles: One curves inward holding what you’re cutting in contact with

NEW!



the sharp edge, the other outward, bulging at the tip for close-in cutting in a horizontal wrist sweeping motion.

- ▶ Ambidextrous tip-up/tip-down clip
- ▶ Walker LinerLock
- ▶ Weight reducing spine swedge
- ▶ Spine and choil jimping
- ▶ G-10 handle with dual full-length steel liners
- ▶ Hollow-ground blade

NEW!

C94 UK PENKNIFE

Man’s oldest tool is today governed by restrictions in most countries including the United Kingdom. Their legal parameters state folding knives cannot have blades that lock open so our blade stays open via a notched-joint that produces resistance to closing.

- ▶ Made in Golden, Colorado
- ▶ Ambidextrous tip-up wire clip
- ▶ Finger choil
- ▶ Spine jimping
- ▶ Double flat-ground blade
- ▶ G-10 handle



C113

NEW!

C113 CALY3

A U.K. Penknife with a lock, the Caly3 is a workingman's, or woman's folder. Founded on the philosophy that the most comfortable, usable pocketknife is one that feels like a natural extension of your hand.

- ▶ Ambidextrous tip-up clip
- ▶ Spine and choil jimping
- ▶ Mid-positioned backlock
- ▶ G-10 handle
- ▶ Flat-ground leaf-shaped blade



C115

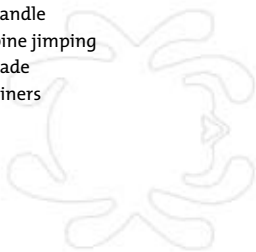
Production
Prototype
Pictured

NEW!

**C115 T-MAG
BY RALPH TURNBULL**

Innovational knifemaker Ralph Turnbull's T-Mag houses a Rare Earth (Neodymium NdFeB) Magnet. Magnet performs like a notch- or slip-joint holding the blade open when used and closed when pocketed.

- ▶ Made in Golden, Colorado
- ▶ Ambidextrous tip-up clip
- ▶ Carbon fiber handle
- ▶ Finger choil spine jimping
- ▶ Flat-ground blade
- ▶ Full titanium liners





Salt Series



Iron is simply iron, until you add carbon. Then it becomes steel. The more carbon added to blade steel the better it holds a cutting edge but carbon does have a weakness- chloride. When chloride and carbon steel meet they're attracted to each other and the reaction results in rust, pitting and corrosion.

Every cutlery company experiments with rust-free blade steels promising high-performance cutting. No one discovered the mother-load till the unveiling of steel called H-1.

H-1 is a precipitation-hardened alloy with .1% nitrogen instead of carbon. Nitrogen performs like carbon in the steel's matrix raising its hardness and retention. Nitrogen and chloride have no affiliation to each other and cannot physically induce rust production. H-1 holds a keen edge comparable to existing premium carbon-based knife steels and work-hardens at the cutting edge when processed and sharpened. Its properties fit and fill the need for high cutting performance in fresh/saltwater and in hot, humid conditions.

Having a rust free blade would be irrelevant if the rest of package fell apart at the sight of salt or liquid. All Salt Series knives' internal components and clips are rust impervious as well.

Go forth, dive in, get wet and forget the worries of rust. We've got you sharply covered.



C88

C91

C89

C88 SALT I C91 PACIFIC SALT

Both the Salt-I and Pacific Salt have thicker rounded-off tips where outdoor knives see the most action and use. Spine jimping and chamfered handles keep them fixed in-hand and slide-free in water.

- ▶ Ambidextrous tip-up titanium clip
- ▶ Black or Marine Yellow FRN Volcano Grip handles
- ▶ David Boye Dent
- ▶ Lanyard hole for cord attachment in water
- ▶ 14mm Spyderco Round Hole
- ▶ Hollow-ground blade

C89 ATLANTIC SALT

Rounded Sheepfoot blades originated with mariners, where if dropped on deck couldn't puncture a foot or fellow crewmember. Our H-1 Sheepfoot blades are preferred by seafarers seeking rust-free equipment, but equally embraced by rescue workers, LEOs/EMTs, ranchers, anyone cutting in commotion or emergency.

- ▶ Ambidextrous tip-up titanium clip
- ▶ Black or Marine Yellow FRN Volcano Grip handles
- ▶ David Boye Dent
- ▶ Lanyard hole for cord attachment in water
- ▶ 14mm Spyderco Round Hole
- ▶ Hollow-ground blade



KEYCHAIN KNIVES



C106

C106 TASMAN SALT

Hawkbill blades curve around marine rope, webbing and netting for downward and pulling cuts. The curved tip holds what you're cutting against the sharpened edge keeping it from slipping off and away.

- ▶ Ambidextrous tip-up titanium clip
- ▶ Black or Marine Yellow FRN Volcano Grip handles
- ▶ David Boye Dent
- ▶ Lanyard hole for cord attachment in water
- ▶ 14mm Spyderco Round Hole
- ▶ Hollow-ground blade



LBK3



LBK3



NEW!

LBK-3 LADYBUG LIGHTWEIGHT

The LBK-3 is a high-performance micro-matter separator. Improved blade is thicker from tip to heel with added jimping behind the enlarged 9mm Spyderco Round Hole.

- ▶ Clipless
- ▶ FRN slip-resistant handle
- ▶ Lanyard for backup attachment
- ▶ David Boye Dent

LBK-3 LADYBUG STAINLESS

Stainless handled version of the Ladybug 3.



Balisong



Whether referred to as butterfly or balisong knives their origins remain cloudy. Some experts say the knife design first emerged in 18th century France or Britain, others believe earlier in the Philippines. Wherever they started, butterfly knives are all about swinging, or as some call it doing the dance. Learning to control and proficiently swing one requires committed practice and coordinated manipulation skills. Spyderco's butterfly knives include traditional Balisong elements mixed with several innovative Spyderco features.

Butterfly knives traditionally have two solid and stick-straight handle sections. Ours differ by having contoured handles, and a Spyderco Trademark Round Hole incorporated into each end. The round-shaped hole lets the thumb and finger pinch together over the hole for more fluid swinging and rotating. Contoured dips and valleys along the handle's surface create friction resistance and keep the knife firmly in-hand. The spring-loaded locking lever attaches to either handle section for left- or right-handed users and locks the blade closed (but not open) for safe pocket carry. Simply squeezing the locked handles together releases the lever.

We centerline grind our Flys' blades so weight is distributed equally on to both sides of the knife. This generates a perceptible point of balance while flipping. The wire pocket clip attaches to either handle section and either side of the knife offering a variety of carry options and draw positions.

Spyderco butterfly knives link the utilitarian features found in a traditional butterfly with functional innovation you've come to expect from Spyderco. Care to dance?



B01 SPYDERFLY **B01TR SPYDERFLY TRAINER**

Elongated cast stainless steel handle sections and Spyderco Round Holes let you swing smoother and with additional maneuver options.

- ▶ Ambidextrous tip-up clip attached to either handle section
- ▶ Centerline grind for equal weight distribution and balance
- ▶ Chamfered pinch-free handle
- ▶ Hollow-ground blade sharpened on one side only

B03 SZABOFLY

Laci Szabo is a knife-designer, professional martial artist, adventurer and film actor. His Asian influenced butterfly curves to fit the hand and the blade in turn, curves to fit inside the handle. Exotic, dynamic, trendsetting.

Man's first cutting implements were undoubtedly sharp pieces of knapped flint, stone or bone. Technically these would have been considered fixed blades since they were composed of a single cutting surface with no moving parts. Modern fixed blades may exist on a higher plane of sophistication but their functional premise is exactly the same- they cut. The beauty of fixed blades is there are no moving parts. Nothing to fold or fail and the blade is as strong as the materials used and the muscle behind it.

Our blades focus on refined high-performance and ease and comfort carrying them. They carry in custom-fitted sheaths equipped with Tek-Lock® clips. The Tek-Lock® locking device positions the knife to draw: vertically, inverted, cross-draw, horizontally or the small of the back or can be removed altogether. Fixed blades remain simply the most fail-safe knife option available.

Fixed Blades





FB01 BILL MORAN UPSWEPT

FB02 BILL MORAN DROP POINT

With the passing of Bill Moran in 2006, our industry lost the founder of the American Bladesmith Society and a trendsetting pioneer in American knifemaking. We honor his legacy with two collaborations: FB01 upswept Trailing Point blade and FB02 an outdoor inspired drop-point blade.

- ▶ Kydex® sheath with five-position Tek-Lok® fastener (removable)
- ▶ FRN handle with non-slip Kraton inlays
- ▶ Blade and handle are equal weight for balanced control.
- ▶ Flat-ground Trailing Point or Drop-point blade



FB11 KUMO BY R.J. MARTIN

In Japanese, Kumo means spider. Knifemaker R.J. Martin's blade has a swedge-grind on the spine that converges center-blade with the edge's hollow-grind. Traditional Japanese handle is hand-wrapped with epoxy-saturated cord over stingray skin and a silver Spyderco Menuki.

- ▶ Boltaron® sheath with five-position Tek-Lok® fastener (removable)
- ▶ Lanyard hole
- ▶ Centerline ground spear-point blade



FB15 STREET BEAT BY FRED PERRIN

Fred Perrin is a Parisian knifemaker, former French Army Commando and world-ranked martial artist. His Street Beat's considerable handle choil creates a balance point between blade and handle. Double pinned, contoured Micarta handle. Full steel and slab construction.

- ▶ Boltaron sheath with five-position Tek-Lok® fastener (removable)
- ▶ Wrist lanyard in the blade with another in handle
- ▶ Spine jimping
- ▶ Double flat-ground blade



NEW!



FB18

FB19

33

Production Prototype Pictured

Production Prototype Pictured

Production Prototype Pictured

NEW!

**FB16 FORESTER
FB17 FORAGER
FB18 WOODLANDER
FB19 DAYHIKER
BY JERRY HOSSOM**

Jerry Hossom started making knives over 25 years ago. All sizes are ready for outdoor use with, full-bellied cutting edges, upswept tips and rounded spines. A handguard, finger choil, and deep jimping on the thumb ramp keep the hand engaged on the handle whether light cutting or all out chopping.

- ▶ Full steel and slab construction.
- ▶ Kydex sheath with five-position Tek-Lock® fastener (removable)
- ▶ Wrist lanyard in the blade with another in handle
- ▶ Contoured Micarta Handle
- ▶ Flat-ground blade
- ▶ Made in Italy

Kitchen



The heart of any kitchen blade is its steel. Ours are VG-10 with high carbon (approx 1%) for long-term edge retention. Included in the mix is Chromium (15%) for stain-resistance and Cobalt (1.40%) and Vanadium (0.20%) both of which increase strength, inhibit wearing and make the steel harder.

Our SpyderEdge (serrated) blades are ground in a Two-Step Serration Pattern. Varied levels of teeth allow the tallest-protruding points to introduce and initiate penetration while the second-level teeth continue separating food following the cut path. When food reaches the protected curved recesses, their thin keen edges finish off the cut. Stepped serrations allow the edge to stay sharp longer by increasing the blade's cutting surface area. Our PlainEdge blades are flat-ground, micro-thin at the edge, passing through foodstuff, even frozen items without friction or resistance.

Bon appetit!



KX06S YIN KITCHEN KNIFE **KX06P YANG KITCHEN KNIFE**

Yin and Yang are opposite and complementary forces. Together they're unstoppable for food preparation. Yin blade has an ebony wood handle and SpyderEdge serrations. Yang has a blond birch-wood handle and PlainEdge blade.

*Sold separately.

- ▶ Full flat-ground blades
- ▶ Finger guard between blade and handle
- ▶ Hand washing is recommended

Sharpen



*“First we made things sharp,
then we made sharp things.”*

Our sharpening stones are Alumina Ceramic, manufactured in the U.S. using a process combining a bonding agent with alumina particles that are actually synthetic sapphires. They are formed, then kiln fired around 3000 degrees F (1649°C). Alumina Ceramic stones measure 9 on the Mohs hardness scale (out of 10) and don't require lubricants like oil or water for use.

Medium grit stones (brown) are closed-cell stones and will wear out over time and repeated use. Their abrasiveness is ideal for removing steel stock or for dull blades and edges requiring re-profiling. Our fine and ultra-fine grit stones (white) are closed-cell ceramic and won't wear with usage or time. They're less abrasive and excel at polishing and professionally finishing an edge. They are temperature resistant and dishwasher and autoclave safe but as with any ceramic or glass implement, they will break or chip if dropped or roughly handled.

Cleaning Spyderco ceramic stones:

Wash stones in fresh water and scrub with powdered abrasive cleanser and a plastic scouring pad—rinse and air dry.

ers



37

204MF TRI-ANGLE SHARPMAKER

Includes one pair medium-grit (brown) stones for aggressive sharpening and one pair of fine-grit (white) stones for professional-grade finishing. Patented triangular shape sharpens PlainEdges on the flat sides and SpyderEdges (serrations) on the corners. A groove running the stone's length sharpens pointed items (fishhooks, darts, awls, punches). Keyed slots/holes in the ABS plastic base pre-set the stone's sharpening angle to a 30° (15° each side) or 40° (20° each side). End of the base has a 12.5° scissor setting. Underside of the base accommodates two side-by-side stones (flat side up) for benchstone sharpening. Plastic lid snaps halfway over the base as a handhold and a pair of brass safety rods protects the user's hands during sharpening. All components fit into the base and the lid snaps as a cover for portability. Base can be bolted to a counter-top for permanent use. Instruction 204DVD and booklet included.



204DVD



204DVD TRI-ANGLE SHARPMAKER INSTRUCTION DVD

Detailed how-to for sharpening plain and serrated edges, edged tools and household implements using the Tri-Angle Sharpmaker.

204UF1 TRI-ANGLE SHARPMAKER STONE ULTRA-FINE

Ultra-fine stones tighten and smooth the cutting edge's scratch pattern for an even keener, hair-popping professional edge. Fits the 204 Sharpmaker system. Sold individually. 7" X .5" (178mm X 13mm)

204F1 TRI-ANGLE SHARPMAKER STONE FINE

Designed for professional-grade finishing and polishing. Fits the 204 Sharpmaker system. Sold individually. 7" X .5" (178mm X 13mm)

204M1 TRI-ANGLE SHARPMAKER STONE MEDIUM

Medium triangle noticeably sharpens and removes stock.

Fits the 204 Sharpmaker system. Sold individually. 7" X .5" (178mm X 13mm)

204D DIAMOND TRIANGLES

Diamond abrasives are recommended for stock removal, restoration and aggressively re-shaping, re-profiling and re-beveling cutting edges. Fits the 204 Sharpmaker system. Sold in pairs.

To clean Diamond Triangles rinse them in fresh water and air dry.

Diamond Triangles: 7" X .5" (178mm X 13mm)



302

302 BENCHSTONES

Spyderco benchstones effectively sharpen wide tools like chisels, large blades, woodworking equipment, plane irons and ski/snowboard edges. Sold individually in a polymer case with rubber skid-stopping tabletop feet. 2" X 8" X 1/5" (51mm X 203mm X 13mm)

- ▶ 302UF Benchstone Ultra Fine - Black box
- ▶ 302F Benchstone Fine - Light Blue Box
- ▶ 302M Benchstone Medium -Dark Blue Box



400F

400F CERAMIC FILES

Gunsmiths, jewelers and dental techs require specialty-shaped sharpening stones for honing and deburring hardened molds, even carbides. Fine-grit stones. Stone approx: 5" X 1/4" (127mm X 6.4mm)

- ▶ 400F 4-File Set in a snap-close suede pouch.
- ▶ 400F1R -Round Ceramic File
- ▶ 400F1S -Square Ceramic File
- ▶ 400F1T -Triangular Ceramic File
- ▶ 400F1SP -Slip (teardrop) Ceramic File



303F POCKET STONE FINE 303M POCKET STONE MEDIUM

Slip-into-a-pocket, palm-sized rectangular pocket stones head to the hills for field-use and honing smaller items. Sold separately.

- ▶ 303M medium grit stone (brown)
- ▶ 303F fine grit stone (white)
- ▶ Spyderco embossed smooth leather carrying case.
- ▶ 1" X 5" x 1/8" (25mm X 127mm X 3.2mm)

303MF DOUBLESTUFF

Double the sharpening potential-Doublestuff bonds together a fine and a medium 303 stone.

- ▶ Smooth leather carrying case.
- ▶ 1" X 5" x 1/4" (25mm X 127mm X 6.4mm)

701MF PROFILE SET

Elliptical-shaped Profiles have three sharpening surfaces: 1. Flat-surface with large radius for sharpening PlainEdges. 2. Small radius for SpyderEdges (serrations). 3. The groove running the stone's length fits pointed objects (darts, fish-hooks, awls).

- ▶ Stones sold separately or as a pre-packaged pair.
- ▶ 3/4" X 8" X 1/4" (19mm X 203mm X 6.4mm)
- ▶ 701F Profile Fine
- ▶ 701M Profile Medium



TSBK

PSBK



PSKH



41



TSBN



HATBK



NEW!

TSBK BLACK SPYDERTRIBE TEE

TSBN CHOCOLATE SPYDER TEE

6.1 oz. pre-shrunk 100% combed ring-spun cotton short sleeve tee-shirt. Double-needle stitching on neck, sleeve and bottom hem.

- ▶ Black SpyderTribe Tee: M-L-XL-XXL
- ▶ Chocolate Spyder Tee: M-L-XL-XXL

PSBK/PSKH POLO SHIRTS

SpyderWear Classic 60/40 cotton/poly-comfort polo shirt: Three-button placket, non-roll collar, front/back tail split. Embroidered Spyderco name and logo. Black: M-L-XL-XXL Sand: M-L-XL-XXL

NEW!

VSBK FLEECE VEST

Ultra-soft napped fleece with anti-pill finish, zippered side pockets and shock cord drawstrings. Embroidered with Spyderco name and logo. Black only XS-S-M-L-XL-XXL

HATBK BLACK SPYDERTRIBE

NEW!

Bucket your brain with Spyderco high-performance headgear. Stretch-band flexible-fitted hat. 100% brushed cotton. Hand-wash. One size fits all.





SP1



SP2



CTO2/CT03



SP1/SP2 SPYDERPAC SMALL & LARGE

A safe, secure and practical method for transporting and displaying your knives. Heavy-denier polyester Cordura® with clear-window viewing pockets. Fold-over Velcro® closure. Adjustable shoulder strap. Embroidered Spyderco logo, black only.

C12C ZIPPERED POUCH

6-1/2" X 3" (165mm X 76mm) holds a folder up to 5-1/2" long. End-to-end access zipper. Non-scratch pile-plush lining. Mock leather with a bug logo.

CTO2/CT03 KNIFE STANDS SMALL & LARGE

Crystal Lucite wedge displays a knife held at a 45° angle by the open blade.
24 pieces per box: Large 3-1/2" (89mm) or Small 2-1/2" (64mm).



STK1



STK2



43



BN1

STK1/SKT2 STICKERS ROUND & OBLONG

Spyderco name and logo decals are non-permanent, front stick and with transparent background.

STK1 Round: 4" (102mm)

STK12 Oblong: 12" X 2-3/4"
(302mm X 70mm)

BN1 BANNER

PVC-substrate 10 oz. woven poly
Spyderco banner with four corner grommets. 18" X 48" (457mm X 1219mm)

CT01 DISPLAY CASE

Freestanding countertop display case is hinged at the bottom. Lever lock closure (includes 2-keys). Holds 6 open folding knives. High impact acrylic. Footprint: 6 X 10-5/8" (152 X 270mm), Height: 16-7/8" (429mm), Weight: 30oz (850g)



CT01

Edge-U-



Spiderco

Cation



Back Lock



Ball-Bearing Lock



Chris Reeve Style Integral Liner Lock



Compression Lock



LinerLock



Mag-Lock



Notch Joint



Trigger Lock

WARRANTY

Spyderco knives are designed and built for use as cutting tools. Use of our knives for any purpose other than cutting is considered abuse. As with any tool Spyderco knives can wear out. They may also fail to perform if not used or cared for properly. If your knife has been put to hard use for a long period of time, it is possible that the useful life of the Spyderco product has been exceeded and Spyderco will be unable to perform any work upon the knife that will improve the condition thereof.

WARRANTY INFORMATION:

- Spyderco warrants that all of our products are free from defects in material and workmanship.
- Repairs to your knife performed by any source other than Spyderco Inc. unconditionally voids the knife's warranty.
- Spyderco's warranty does not cover damage caused by abuse, misuse, loss, improper handling, alterations, accident, neglect, disassembly, or improper sharpening.
- If a knife fails to function as it was designed, we will examine its condition upon its return to Spyderco, identify why it failed and respond in an appropriate manner.
- If we determine there is a defect in the manufacture/materials/workmanship, Spyderco will repair, or replace that product with the same model or one of equal value at its own expense.
- If a problem with a returned knife is determined to be caused by something other than a defect in manufacture/materials/workmanship, Spyderco will inform you whether the product can be repaired and the cost to you of having Spyderco implement such repair (see below). Upon agreement and payment we will perform the repair.
- If Spyderco is unable to improve the condition of the knife, we will return it to you with the recommendation it be retired from use. All costs associated with shipment of the product(s) are the responsibility of the customer.

REPAIR INFORMATION:

- Sharpening – Complimentary on PlainEdge, SpyderEdge or CombinationEdges provided the edge of the knife is not severely damaged – Please include \$5.00USD shipping and handling.

For the following repairs, please include \$20.00USD plus \$5.00USD shipping and handling:

- Blade or Edge – Broken tip from prying or dropping, destroyed edge due to improper sharpening, loose blade from abuse, rust due to neglect or other blade issues. (Spyderco is unable to replace blades in most models)
- Clips – Stripped screw holes, screws sheered off, broken or missing clip or other clip issues.
- Scale or Handle – Missing scale screws, knife action stiff, missing Kraton, or other handle issues.

WHERE TO SEND YOUR KNIFE:

When sending your knife for warranty or repair- include a description of the problem and how it occurred. Include: Company or individual name, return address (no P.O. Boxes please) daytime phone number. We recommend shipping UPS or registered mail for your tracking purposes.

Spyderco, Inc.

Attn.: Warranty and Repair

820 Spyderco Way,

Golden, CO 80403 USA

Phone: 800-525-7770 / 303-279-8383 Fax: 303-278-2229

Email: customerservice@spyderco.com

BASIC KNIFE MAINTENANCE:

Insure safe operation by regularly inspecting the knife's interior for lint, obstructions, etc. Clean the lock well and inside the handle using a toothpick, hot water and detergent. Rinse with fresh water, dry inside and out and lubricate steel components with oil/silicone. A sharp knife makes cutting easier and safer and lengthens its usable life. Like any tool, knives do wear out.

RELEASE, ASSUMPTION OF RISK, WAIVER OF LIABILITY AND INDEMNITY AGREEMENT.

By purchasing any item produced by Spyderco, Inc. the buyer assumes responsibility to ascertain and follow all applicable federal, state, local and international laws in having, owning, carrying, shipment, transporting, and use of any Spyderco product. The buyer expressly agrees to indemnify and hold harmless Spyderco, Inc. for all claims resulting directly or indirectly from the purchase, ownership, transportation or use of the item in violation of applicable federal, state and local laws or regulations. Spyderco is not liable for misuse of any Spyderco knife or product purchased either directly from Spyderco or from a dealer/distributor. You must be 18 years of age to purchase Spyderco knives. Spyderco's warranty gives you certain legal rights. You may have other rights, which vary in different states and municipalities.

* Information included in this catalog is subject to change without notice. Modification of products, materials, measurements, technical specifications and availability can occur. Contact your local Spyderco dealer for information.

47

EDGE-U-CATION

WHY THE SPYDEREDGE?

A serration's tips provide single point penetration while the center of effort rotates around each serration, increasing the cutting edge length by up to 24%. The sharpened recessed curve has more linear cutting surface than a straight edge. Edge retention is greater because the serration's tips initiate the cut easing the workload on the recessed edges while protecting the sharp inside cutting curves so they wear less over time. Our two-step serrations (SpyderEdge) have a repeated pattern of one large and two small serrations.

CLIP

Spyderco was first to incorporate clothing clips on pocketknives. The clip lets you securely attach the knife to a pocket or other convenient location for easy access. CLIPITS are designed so the knife carries on the inside of a pocket with the clip on the outside. In this position the knife sits/rides flat inside the pocket regardless of size and can be retrieved when needed.

SPYDERCO TRADEMARK ROUND HOLE

The Spyderco Trademark Round Hole is the industry symbol of quality. It is our most recognizable feature and facilitates easy opening and closing of our knives with one hand. The hole offers convenient access and maximum control while opening as well as accommodating large, small and gloved hands. The position of the hole in the blade and the fact that it is round allow for a continuous opening motion. The thumb rests against the hole at a comfortable distance from the palm permitting easy rotation from the pivot point.

To open the knife using the hole, place the knife in your open hand at the base of your fingers and grasp the clip side of the handle with the tips of your fingers. Rest the pad of your thumb in the hole, then gently and smoothly slide the blade away from the handle. When a solid click is heard, the knife is locked in the open position (note that the blade should always be locked securely in the full open position before use).

STEEL ELEMENTS

We at Spyderco gravitate towards superior products. We are committed to using the best materials available at the time. As the world of steel evolves, so do our products. There are over 3000 different types of steel, each having its own positive and negative attributes. In order to determine your own preferences, it is perhaps best to first understand the history of steel and how it is made.

Although an exact date of discovery is not known, man has been forging steel for as long as he's been working iron. Ironworkers learned to make steel by heating wrought iron and charcoal (a source of carbon) in clay boxes for a period of several days. By this process the iron absorbed enough carbon to become a true steel.

Iron by itself is a relatively soft metal; it does not hold a good edge. However, if you add Carbon it hardens the iron, making steel. Steel has proven to be ideal for making edged weapons.

At a very simplified level, making steel is like baking a cake. You follow a precise recipe to achieve the type of cake (steel) that you desire. You begin with flour (iron) and from there you add various ingredients (elements). These additional ingredients will determine what type of cake (steel) you end up with. Once you have added all of

the additional ingredients (elements) you are left with a batter that is ready to bake (heat treat). Baking (heat treating) is just as much a part of the “recipe” as the ingredients (elements). If not done properly, several properties can suffer. Once baked, you have a new – completely different – finished product. Your cake will forever be a cake; it can never go back to being batter. Of course steel can be re-melted to a molten state, but that simply is the beginning of becoming a new type of steel.

Steel is an alloy of iron and carbon; just as bronze is an alloy of copper and tin. Historically, steels have been prepared by mixing the molten materials. Alloying elements are melted and dissolved into molten iron to make steel. The molten steel is cast into an ingot, which is then rolled out (while it is still hot) and shaped much like you would roll out cookie dough. As the steel begins to slowly cool below the critical temperature, things start to happen inside the steel. At these elevated temperatures, alloying elements are able to move around in the steel, or diffuse. Different elements diffuse at different rates, (typically the larger the atom, the slower it diffuses). If the alloying contents are too high for some elements to assimilate with, the excess will separate or segregate out of the steel and form inclusions or possibly combine with another element to form large undesirable carbides. These diffusional processes are also controlled by the austenite grain size of the steel – grains are little packets of specifically oriented crystals. Grain boundaries act as barriers to diffusion, the smaller the grains, the more boundaries, and the slower the steel. This limits the performance capabilities of the steel both in corrosion resistance, and in wear resistant carbide formation.

More recently, **Powder Metallurgy** has become the chosen method of preparation. The difference in the processing of a powdered metal allows for steel chemistries not possible with traditional steel-making practices. The process starts out the same as wrought steels – alloying elements are added and dissolved into molten iron. Then comes the main difference. The molten steel is atomized (misted into microscopic droplets) into liquid nitrogen where the steel is instantly frozen, leaving no time for diffusional processes. The chemistry of the resulting powder is identical to that in the molten vat. Additionally, there are no inclusions or large carbides that form. The austenite grain size is the size of the powder at the very largest, which is small. The powder is then cleaned and sorted by size and then the remaining ideal powder is sintered in a hot isostatic press to solidify the steel. Sintering is heating the steel to a temperature just below its melting point, and then pressing it together at high pressures to solidify or remove the voids between powder spheres. This allows for drastic changes in the steel chemistry namely in carbon and vanadium. A larger volume of the highly wear resistant vanadium carbides form upon heat-treating. Since Vanadium has a greater propensity to interact with carbon and form carbides than it does with Chromium, most of the excess carbon is utilized in the formation of vanadium carbides. These leave the Chromium free to help keep the steel corrosion resistant. The result is a premium steel product with properties of exceptional wear-resistance and good corrosion-resistance.

Heat-treating the steel to its critical temperature allows the carbon atoms to enter into the crystalline molecules of the iron, which have expanded due to the heating. Quenching the steel at this point causes the molecules to contract, trapping the carbon atoms inside.

More specifically, the process of hardening steel by heat treatment consists of heating steel to a temperature at which austenite is formed. Austenite has the property of dissolving all the free carbon present in the steel. Quenching is then used to “freeze” the austenite changing it to martensite. These treatments set up large internal strains in the steel; these are relieved by tempering (further heating the steel at lower temperatures). Tempering the steel decreases the hardness, strength and brittleness. It however, increases the ductility and toughness.

Steels are classified accordingly with the elements used in production. These classifications are, Carbon Steels, Alloy Steels, High-Strength Low-Alloy Steels, Stainless Steels, Tool Steels and Exotic Steels (non steel).

Carbon Steels contain varying amounts of carbon and not more than 1.65% of manganese and .60% of copper. There are 3 types of Carbon Steels, Low (.3% or less), Medium (.4-.8%) and High (.9% and up). High carbon is commonly used for knives.

Alloy Steels have a specified composition, containing certain percentages of vanadium, molybdenum, or other elements, as well as larger amounts of manganese, silicon, and copper than do regular carbon steels.

High-Strength Low-Alloy Steels known as HSLA steels are relatively new. They cost less than do regular Alloy Steels because they contain only small amounts of the expensive alloying elements. They have been specially processed, however, to have much more strength than Carbon Steels of the same weight.

Stainless Steels contain a minimum of 12% Chromium. The Chromium provides a much higher degree of rust resistance than Carbon Steels. Various sources site differing minimum amounts of Chromium required to deem a steel as stainless (10-13%). It is important to note, that the amount of Chromium needed can be dependant upon the other elements used in the steel.

Tool Steels contain Tungsten, Molybdenum and other alloying elements that give them extra strength, hardness and resistance to wear.

Exotic Steels are generally accepted as steel, but by definition are not steel. Examples of Exotic Steels include H1, ZDP-189, Talonite and Titanium.

There is an old proverb, "There was never a good knife made of bad steel." This statement, just like steel itself, is completely subjective as it relates to knives and knife knuts. We hope this information provides you with a foundation to make your own determinations where steel is concerned.

STEEL COMPONENTS:

Carbon (C)

- Increases edge retention and raises tensile strength. Increases hardness and improves resistance to wear and abrasion.

Chromium (CR)

- Increases hardness, tensile strength, and toughness. Provides resistance to wear and corrosion.

Cobalt (CO)

- Increases strength and hardness, and permits quenching in higher temperatures. Intensifies the individual effects of other elements in more complex steels.

Copper (CU)

- Increases corrosion resistance.

Manganese (MN)

- Increases hardenability, wear resistance, and tensile strength. Deoxidizes and degasifies to remove oxygen from molten metal. In larger quantities, increases hardness and brittleness.

Molybdenum (MO)

- Increases strength, hardness, hardenability, and toughness. Improves machinability and resistance to corrosion.

Nickel (NI)

- Adds strength and toughness.

Nitrogen (N)

- Used in place of carbon for the steel matrix. The Nitrogen atom will function in a similar manner to the carbon atom but offers unusual advantages in corrosion resistance.

Phosphorus (P)

- Improves strength, machinability, and hardness. Creates brittleness in high concentrations.

Silicon (SI)

- Increases strength. De-oxidizes and degasifies to remove oxygen from molten metal.

Sulfur (S)

- Improves machinability when added in minute quantities.

Tungsten (W)

- Adds strength, toughness, and improves hardenability.

Vanadium (V)

- Increases strength, wear resistance, and increases toughness.

PATENTS AND TRADEMARKS

The following marks are recognized trademarks of Spyderco, Inc.: Advntr, Adventura, Assist, Atlantic Salt, A.T.R, Ball Bearing Lock, Bi-Directional Texturing, Bi-Fold, Black Hawk, byrd knife, Caly3, Calypso, Calypso Jr., Captain, Cara Cara, Catcherman, Chinoak, Civilian, Clip-Kit, CLIPIT, Clutch-Lock, Cobra Hood, CombinationEdge, Compression Lock, CoPilot, Cricket, Crossbill, Crow, Dayhiker, Delica, Delica II, Delica III, Delica4, DK Penknife, Dodo, Double Stuff, Dragonfly, Dyad, Dyad Jr., Edge-U-Cation, Endura, Endura II, Endura III, Endura4, Evolution Edition, Executive, Finch, Firebyrd, Flight, Forager, Forester, Galley "V", Gunting, Harp, Harp Tool, Harpy, Hummingbird, Hunter, Impala, Jester, Kinetic Opening, Kiwi, Kopa, Kris Folder, Kumo, LadyBug, LadyBug II, Lava, Little Big Knives, Lil' Temperance, LBK, Manix, Mariner, Matriarch, Meadowlark, MeerKat, Merlin, Micro Dyad, Military Model, Mini Dyad, Mini Mariner, Mini Probe,

Native, Native II, Native III, Navigator, Ocelot, P'Kal, Para-Military, Pacific Salt, Pegasus, Pelican, Persian Folder, Phantom Lock, Pikal, PlainEdge, Police Model, Pre-Diver, Pride, Poliwoog, Probe, Pro Culinaire, ProFile, Pro-Grip, Pro-Venator, "Q", "R", Raven, Remote Release, Renegade, Rescue, Rescue Jr., Robin, Ronin, Rookie, "S", Salsa, Salt I, Scorpius, SecureLock, SecurLok, Shabaria, Sharpmaker, SharpMaker, SmallFly, Snap-It, Spin, Sprint Run, S.P.O.T., Solo, Speed Sleeves, SpringClip, SpringLock, Sprint Run, Spur, SpyderCard, Spyderco Trademark Round Hole, SpyderEdge, SpyderFly, SpyderHawk, Spyderkey, SpyderPac, SpydeRench, SpyderSaw, Spyker, Standard, Starling, Starmate, Street Beat, Stretch, SuperHawk, Swick, SzaboFly, T-Mag, Tasman Salt, Temperance, Trakk'r, Tri-Angle Sharpmaker, UK Penknife, Vagabond, Vesuvius, Volcano Grip, Volpe, Woodlander, Worker, Yin Kitchen Knife, Yang Kitchen Knife, Yojimbo. The following slogans are recognized trademarks of Spyderco, Inc.: "First We Made Things Sharp... Then We Made Sharp Things", "High Performance Matter Separators", "Integrity is Being Good Even if No One is Watching", "Quality is the Product of a Good Attitude", and "Those Who Know Carry Spyderco". The following marks, designs and slogans are registered trademarks of Spyderco, Inc.: G. Sakai, Native, Spyderco, Spyder Bug Design, Round Hole Design, and "All God's Critters Have Knives". Spyderco, Inc. products are covered by one or more of the following patents:

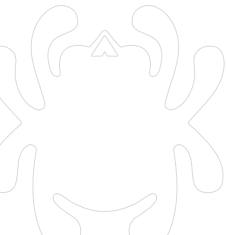
1,957,810, 728008, TMA502,771, 2,033,317, 669,496, TMA468,742, 262519, 2,032,472, 742,786, 2,169,685, 1,965,458, 669,495, TMA479,238, 472191, 2,032,465, 742,785, 2,003,071, 1,957,810, 2,239,296, 2,334,210, 2,171,620, 2,171,899, 2,250,477, 2,494,673, 2,491,361, 2,550,975, 2,230,394, 2,464,061, 64569, 64645, 92628, 102268, 171837, 999820, 2,661,729, DE49910779.9, 4,347,665, 4,640,058, 4,776,094, 4,776,094, 5,379,492, 5,615,484, 5,628,117, 5,689,890, 5,704,129, 5,704,129, 5,884,467, 5,920,935, 5,928,069, 5,964,036, 5,983,506, 6,205,667, 6,725,545, 6,751,868, D418,383, 6,918,184, D444,093 D333,081, D333,251, D337,253, D344,006, D349,837, D349,837, D353,988, D379,294 D381,060, D382,189, D382,459, D386,664, D387,966, D388,150, D389,389, D389,718 D391,465, D401,129, D402,177, D402,178, D402,524, D403,567, D404,990, D406,038 D411,431, D411,790, D419,336, D421,378, D422,052, D422,461, D422,871, D422,875 D425,391, D427,500, D429,138, D434,631, D435,420, D436,014, D438,443, D441,827 D442,460, D461,387, D464,551, D468,985, D487,494. Other U.S. and foreign patents pending.

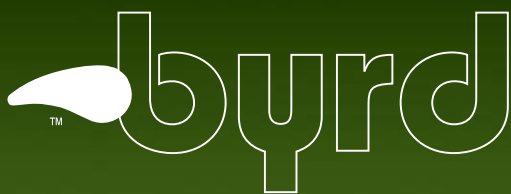
Ball Chain, Cordura, CPM, Crucible, Empire/Boltaron, H-1, Kevlar, KRATON, Kydex, Linerlock, Micarta, Para Cord, Tek-Lock, 440V and S30V are registered trademarks of their respective holders.

Michael Walker is the inventor of the ball bearing detent that is used to keep the blade in a Linerlock closed. H. McBurnette and Al Mar are credited with the positive front lock design. Wave feature licensed under Emerson Pat. #5,878,500.

Copyright © 2006-2007. All rights reserved. All product names, art and text herein are the property of Spyderco,

* Information included in this catalog is subject to change without notice. Modification of products, materials, measurements, technical specifications and availability can occur. Contact your local Spyderco dealer for information.





**2007
PRODUCT
GUIDE**





byrd knives are an entry-level species of knives and pocket tools designed, produced and imported by Spyderco. byrds stand as an independent product line from Spyderco's well-known CLIPIT line. They present the astute knife buyer numerous hard-working knife and tool options at an economical cost with Spyderco's reputation behind it. We've designed and manufactured under the premise that:

“Dependability shouldn't depend on your budget.”

byrd knives feature 8Cr13MoV stainless steel blades. 8Cr13MoV blade steel is similar to AUS-8 in its properties and performance. It contains both molybdenum and vanadium with close to 1% carbon content. Molybdenum enhances the strength and hardness of the steel, vanadium its wear resistance and toughness. Carbon augments the steel's tensile strength and increases its resistance to wear and abrasion. Resulting from this recipe is blade steel that retains a sharp cutting edge for extended time and use. The comet shaped opening hole is a byrd knife trademark and is synonymous with the stringent quality requirements, high performance materials and manufacturing standards invested in each individual knife. byrd products are manufactured in China.

P= Plain Edge

S=Serrated Edge

PS= Combination Edge (serrated and plain combined)



BY03 CARA CARA / BY04 MEADOWLARK

Cara Cara and Meadowlark models are designed and manufactured around the need for well-built folders that offer an elevated ergonomic comfort and user reliability without an astronomical price tag. Both models are suitable for the first time knife buyer or committed knife user looking for value, dependability and innovation.

BY03BK CARA CARA LIGHTWEIGHT BY04BK MEADOWLARK LIGHTWEIGHT

Ultra-lightweight and fleet with high caliber efficiency and performance.

- Ambidextrous tip-up/tip-down clip
- Spine and choil jimping
- Screw construction
- Phosphor bronze bushings for smooth open/close action
- FRN Bi-Directional® textured handle
- David Boye Dent
- Hollow-ground drop-point blade

**BY03G CARA CARA G-10****BY04G MEADOWLARK G-10**

G-10 is an epoxy filled woven glass fiber composite venerated as a handle material for it's lightweight strength and ability to shun chemicals and extreme temperatures.

- Ambidextrous tip-up clip
- Spine and choil jimping
- Screw construction
- David Boye Dent
- Hollow-ground drop-point blade

NEW!

BY03 CARA CARA STAINLESS**BY04 MEADOWLARK STAINLESS**

Fully stainless Cara Caras and Meadowlarks have holes in the handle keeping them lightweight and contemporary.

- Right hand tip-up/tip-down clip
- Spine jimping
- David Boye Dent
- Hollow-ground drop-point blade
- Handle can be engraved or embellished

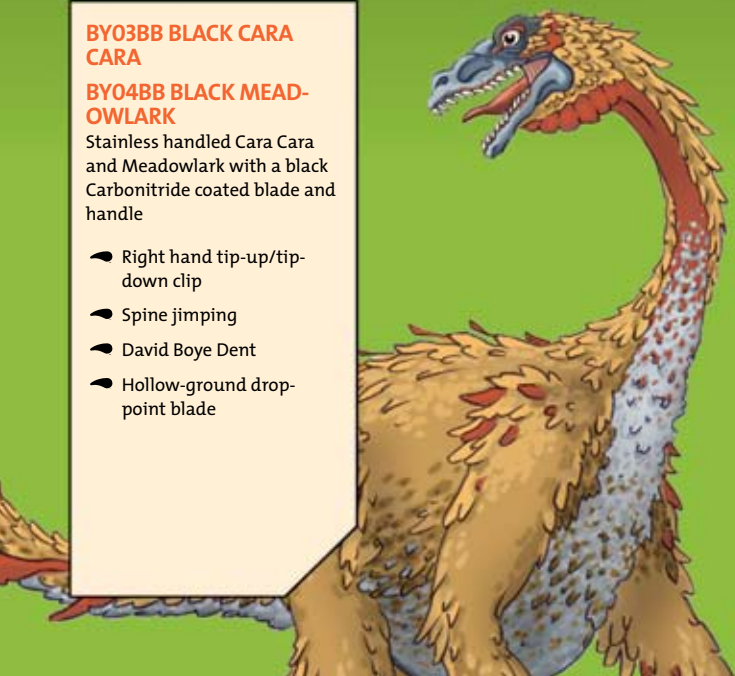


**BY03BB BLACK CARA
CARA**

**BY04BB BLACK MEAD-
OWLARK**

Stainless handled Cara Cara and Meadowlark with a black Carbonitride coated blade and handle

- Right hand tip-up/tip-down clip
- Spine jimping
- David Boye Dent
- Hollow-ground drop-point blade





The Robin's intermediate size makes it a winner for office and weekend carry. Ergonomic, pinch-free chamfered handle lessens user fatigue and discomfort even when strenuously cutting.

BY10G ROBIN G-10

Robin pattern with a G-10 handle.

- Ambidextrous tip-up clip
- Spine and choil jimping
- Screw construction
- David Boye Dent
- Hollow-ground drop-point blade

BY10 ROBIN STAINLESS

Fully stainless handle with contemporary cutout design.

- Right hand tip-up/tip-down clip
- Spine jimping
- David Boye Dent
- Hollow-ground drop-point blade
- Handle can be engraved or embellished

BY11BK FINCH LIGHTWEIGHT BY11 FINCH STAINLESS

Finches yield maximum cutting performance in the smallest possible package. Spine and choil jimping, work in conjunction with a mid-spine positioned back lock to increase comfort and ergonomics.



Available: FRN Bi-Directional textured handle with weight reducing cutouts
-or-
Fully stainless handle ready to be engraved or embellished.

- Hollow-ground blade
- David Boye Dent
- Enlarged Comet shaped opening hole
- Ball/clasp chain included for keychain, purse, pocket or backpack attachment
- Clipless

BY12BK STARLING LIGHTWEIGHT



Sleek and über-compact the Starling works in any size hand. Jimping on the spine and choil lets you wrap your hand around the folder for precision and control. Thinner and more streamlined than the Finch.

- Hollow-ground blade
- FRN lightweight Bi-Directional® textured handle
- David Boye Dent
- Ball/clasp chain included for keychain, purse, pocket or backpack attachment
- Clipless



BY05 FLIGHT

Clip-point blade with an upswept tip for detailed, precise cuts. Ergonomically curved handle has two finger indents letting you choke-up closer to the blade's cutting surface heightening control.

- Right-hand, tip-up/tip-down steel clip
- Hollow-ground blade
- Weight reducing blade swedge grind and handle cutouts
- David Boye Dent
- Handle can be engraved or embellished

BY06 PELICAN

Non-pointed Sheepfoot blades are what boaters and emergency, fire/rescue professionals want. They lessen the likelihood of puncturing or poking when cutting in a hurry or an emergency. Chamfered handle features dual finger-positioning indents eliminating finger pinching and fatigue.

- Right-hand, tip-up/tip-down steel clip
- Weight reducing handle cutouts
- Hollow-ground blade
- David Boye Dent
- Handle can be engraved or embellished

BY07 CROSSBILL

Mariners and fishermen reach for Hawkbill blades when slicing marine rope, netting and lines. The curve makes downward and pulling cuts effective while the curled tip holds what you're cutting against the sharpened edge. Dual position finger indents and weight reducing cutouts.

- Right-hand, tip-up/tip-down clip
- Hollow-ground blade
- Unsharpened swedge grind on the blade spine
- David Boye Dent
- Handle can be engraved or embellished

The Raven and Crow have lightweight aluminum handles corrugated in a feathery pattern that generates tactile resistance when cutting forward or backward. Handle houses internal full-length steel liners and a Michael Walker style LinerLock.

Silver Raven BYo8SL/Silver CrowBYo9SL: Brushed matte-finish stainless blade and black aluminum handle.

BYo8BK Black Raven /BYo9BK Black Crow: Black carbonitride coated blade and handle.

BYo8BK BLACK RAVEN BYo8SL SILVER RAVEN

- Right-hand, tip-up/tip-down clip
- Hollow-ground blade
- Spine and choil jimping
- Adjustable pivot pin and screw construction

BYo9BK BLACK CROW BYo9SL SILVER CROW

Equivalent features as the Raven in a smaller folder.

- Hollow-ground black carbonitride coated blade
- Right-hand, tip-up/down steel clip
- Adjustable pivot pin





byrd



BY 13 HARP TOOL

Harp Tools hailed from Britain in the 1880s. Shaped like a musical harp, they drew their name from that silhouette and housed implements used by tradesmen (farriers, bricklayers and fishermen). Ours features eight functionally generic tools that independently rotate out and snap open. Included: Phillips-head screwdriver, slotted-head screwdriver, saw, corkscrew, file, punch/awl, gimlet, and small/large-head hammer that doubles as a bottle opener. Tool folds flat into a leather case for pocket or belt carry.

BY14FIREBYRD

Three tools every camper, hiker, outdoorsman and cigar appreciator can't do without are a reliable sharp blade, a lighter and a bottle opener. The Firebyrd has all three with a notch-joint (non locking) drop-point blade that opens/closes with one-hand. Aluminum handle holds a standard-sized lighter.

- Right-hand, tip-down clip
- Hollow-ground blade
- Lanyard hole



NEW!

61



NEW!

**TSGR
GREEN BYRD DINO TEE**

6.1 oz. pre-shrunk 100% combed ring-spun cotton short sleeve tee- shirt. Double-needle stitching on neck, sleeve and bottom hem. Machine washable.

-Khaki byrd DinoTee: M-L-XL-XXL

**HATGR
GREEN BYRD DINO HAT**

byrd dinosaur logo stretch-band flexible-fitted hat. 100% brushed cotton. Handwash. One size fits all.

*The dinosaur artwork included in this catalog is an artist's representation of the theory that dinosaurs were the evolutionary forefathers of today's birds. The scientific community began embracing the feasibility of a dinosaur-bird connection with the continuing emergence of compelling fossil discoveries and evidence indicating dinosaurs with feathers were in reality primitive birds.

62

KNIFE SPECS

Model	Closed Length	Overall Length	Blade Length	Edge Length	Steel	Weight	Edge Type	Pg
C10BK Endura 4	5" 127mm	8-3/4" 222mm	3-3/4" 96mm	3-7/16" 88mm	VG-10	3.6oz 103g	P, PS, S	6
C11BK Delica 4	4-1/4" 108mm	7-1/8" 181mm	2-7/8" 73mm	2-9/16" 65mm	VG-10	2.5oz 71g	P, PS, S	6
C10PGYW Endura Wave	5" 127mm	8-13/16" 224mm	3-13/16" 97mm	3-7/16" 88mm	VG-10	3.6oz 103g	P	6
C11PGYW Delica Wave	4-1/4" 108mm	7-5/32" 182mm	2-29/32" 74mm	2-9/16" 65mm	VG-10	2.55oz 72g	P	6
C10FG Endura 4	5" 127mm	8-3/4" 222mm	3-3/4" 96mm	3-7/16" 88mm	VG-10	3.6oz 103g	PS, S	7
C11FG Delica 4	4-1/4" 108mm	7-1/8" 181mm	2-7/8" 73mm	2-9/16" 65mm	VG-10	2.5oz 71g	PS, S	7
C10GRE Endura 4	5" 127mm	8-3/4" 222mm	3-3/4" 96mm	3-7/16" 88mm	ZDP-189	3.6oz 103g	P, PS, S	7
C11GRE Delica 4	4-1/4" 108mm	7-1/8" 181mm	2-7/8" 73mm	2-9/16" 65mm	ZDP-189	2.5oz 71g	P, PS, S	7
C10TR Endura Trainer	5" 127mm	8-9/16" 217mm	3-9/16" 91mm	N/A	AUS-6	3.6oz 103g	N/A	8
C11TR Delica Trainer	4-1/4" 108mm	7" 178mm	2-7/8" 73mm	N/A	AUS-6	2.5oz 71g	N/A	8
C10 Endura	4-7/8" 124mm	8-3/4" 222mm	3-7/8" 98mm	3-7/16" 88mm	VG-10	5-5/8oz 161g	P, PS, S	8
C11 Delica	4-3/16" 106mm	7-1/16" 179mm	2-7/8" 73mm	2-9/16" 65mm	VG-10	4oz 114g	P, PS, S	8
C07 Police Model	5-5/16" 135mm	9-7/16" 240mm	4-1/8" 104mm	3-13/16" 97mm	VG-10	5.6oz 159g	P, PS, S	9
C08 Harpy	3-7/8" 99mm	6-1/2" 165mm	2-3/4" 70mm	2-9/16" 65mm	VG-10	3.75oz 106g	S	9
C12 Civilian	5-3/16" 132mm	9-3/16" 233mm	4-1/8" 105mm	3-3/4" 95mm	VG-10	4.74oz 134g	S	9
C79 Assist	4-7/8" 124mm	8-3/8" 213mm	3-11/16" 94mm	3-3/16" 81mm	VG-10	4oz 115g	PS	10
C14 Rescue 93mm	4-5/8" 116mm	8-3/16" 209mm	3-5/8" 93mm	3-7/16" 86mm	VG-10	2.6oz 75g	S	10
C45 Rescue 73mm	4-1/8" 104mm	7-1/8" 183mm	3-1/8" 79mm	2-5/8" 67mm	VG-10	2.25oz 64g	S	10
C28BK Dragonfly	3-7/32" 82mm	5-7/16" 138mm	2-5/16" 58mm	1-7/8" 48mm	AUS-8	1.2oz 33g	P, S	11
C28 Dragonfly	3-7/32" 82mm	5-7/16" 138mm	2-5/16" 58mm	1-7/8" 48mm	ATS-55	2.6oz 73g	P, S	11
C29 Cricket	2-3/4" 70mm	4-9/16" 116mm	1-7/8" 48 mm	1-3/4" 44mm	VG-10	1.75oz 49.5g	P, S	11
C30 Remote Release 2	4-13/16" 122mm	7-13/16" 198mm	3" 76mm	2-5/8" 67mm	VG-10	2.5oz 71g	S	12
C81 Para Military	4-3/4" 121mm	7-7/8" 200mm	3-3/32" 81mm	2-15/16" 74mm	CPM-S30V	3.75oz 108g	P, S	12
C81BK Para Military	4-3/4" 121mm	7-7/8" 200mm	3-3/32" 81mm	2-15/16" 74mm	CPM-S30V	3.75oz 108g	P, S	12
C36 Military Model	5-1/2" 140mm	9-1/2" 241mm	4" 102mm	3-11/16" 94mm	CPM-S30V	4.25oz 120g	P, PS, S	13
C36BK Black Military Model	5-1/2" 140mm	9-1/2" 241mm	4" 102mm	3-11/16" 94mm	CPM-S30V	4.25oz 120g	P, PS	13
C41BK Native	3-15/16" 100mm	7" 178mm	3-1/16" 87mm	2-1/2" 64mm	CPM-S30V	2.65oz 75g	P, PS	14
C41BBK Black Native	3-15/16" 100mm	7" 178mm	3-1/16" 87mm	2-1/2" 64mm	CPM-S30V	2.65oz 75g	PS	14
C41 Native	3-15/16" 100mm	7" 178mm	3-1/8" 80mm	2-5/8" 66mm	VG-10	4.6oz 131g	PS	14
C78 Native 3	4" 101mm	7-1/16" 179mm	3-1/8" 80mm	2-5/8" 66mm	VG-10	2.8oz 81g	P, PS	14
C63GP3 Chinook 3	4-7/8" 124mm	8-9/16" 217mm	3-3/4" 95mm	3-3/8" 86mm	CPM-S30V	5.8oz 165g	P	15
C66-3 Centofante3	4-1/2" 115mm	7-9/16" 191mm	3-1/8" 79mm	2-15/16" 78mm	VG-10	2.5oz 71g	P	15
C66-4 Centofante4	4-1/2" 114mm	7-1/2" 190mm	3" 76mm	2-15/16" 75mm	VG-10	2.5oz 71g	P	15
C74 Ocelot	4-7/16" 113mm	7-9/16" 192mm	3-1/4" 83mm	2-5/8" 67mm	VG-10	4.1oz 116g	P, PS	16
C75 Kiwi	3-3/16" 81mm	5-7/16" 138mm	2-3/8" 60mm	1-7/8" 47mm	VG-10	1-3/4oz 50g	P	16
C82 D'Alara Drop Point	5" 127mm	8" 203mm	3-1/2" 89mm	3-1/8" 79mm	VG-10	5.1oz 145g	P, PS	16
C86 Spin	2-7/16" 63mm	4-1/8" 105mm	1-13/16" 46mm	1-5/8" 41mm	VG-10	1.35oz 38g	P	17
C86PET Spn	2-7/16" 63mm	4-1/8" 105mm	1-13/16" 46mm	1-5/8" 41mm	VG-10	1.35oz 38g	P	17
C87 Scorpius	4-3/8" 111mm	7-15/16" 186mm	3" 76mm	2-1/2" 64mm	VG-10	4.3oz 122g	P, S	17
T02 SpyderSaw	5-15/16" 151mm	10-7/16" 265mm	4-7/8" 124mm	4-11/16" 119mm	AUS-6	3oz 85g	Sawblade	17
C95 Manix	5-1/16" 129mm	8-3/4" 222mm	3-3/4" 95mm	3-1/4" 83mm	CPM-S30V	6.17oz 175g	P, PS	18
C101 Manix 83mm	4-5/8" 117mm	7-3/4" 197mm	3-9/64" 83mm	2-3/4" 70mm	CPM-S30V	5.5oz 154g	P, PS	18
C98 Poliwog	3-3/8" 86mm	5-5/8" 143mm	2-15/16" 75mm	1-7/8" 48mm	VG-10	4.1oz 116g	P	18
C99 Volpe	4-5/16" 110mm	7-7/16" 189mm	3-7/16" 87mm	3-5/16" 84mm	N690Co	3.9oz 110g	P	19
C102 Adventura	4-3/16" 106mm	7-7/16" 189mm	3-1/4" 83mm	2-3/4" 70mm	VG-10	3.8oz 108g	P	19
C103 PKal	4-1/8" 105mm	7-5/16" 186mm	3-3/16" 81mm	2-13/16" 71mm	CPM-S30V	3.3oz 94g	P	19
C104 Kris	4-7/8" 124mm	8-5/8" 219mm	3-3/4" 95mm	3-1/16" 78mm	VG-10	5.8oz 165g	P	20
C105 Persian 75mm	3-15/16" 100mm	6-7/8" 175mm	2-15/16" 75mm	2-1/2" 64mm	VG-10	3.5oz 99g	P	20
C108 Bi-Fold	3-1/2" 89mm	5-3/8" 137mm	1-1/4" 32mm	1-1/4" 32mm	440C	2.3oz 65g	P, S	21
C109 'S'	3-1/2" 89mm	5-15/16" 151mm	2-7/16" 62mm	2-1/8" 54mm	440C	2oz 55g	P	21
C110 Lava	3-7/16" 87mm	5-5/16" 135mm	1-7/8" 48mm	1-9/16" 40mm	VG-10	3oz 87g	P	22

Model	Closed Length	Overall Length	Blade Length	Edge Length	Steel	Weight	Edge Type	Pg
C111 Captain	4-1/8" 105mm	7-3/16" 183mm	3-1/16" 78mm	2-15/16" 75mm	VG-10	4.75oz 136g	P	22
C94 UK Penknife	4-1/16" 103mm	6-15/16" 175mm	2-15/16" 74mm	2-5/8" 67mm	CPM-S30V	2.4oz 69g	P	22
C113 Caly3	4-1/16" 103mm	7" 178mm	3" 76mm	2-5/8" 67mm	VG-10	3oz 86g	P, S	23
C115 T-Mag	4-1/8" 105mm	7" 178mm	2-15/16" 75mm	2-1/2" 64mm	CPM-S30V	2.8oz 81g	P	23
C88 Salt I	4" 102mm	7" 177mm	3" 76mm	2-11/16" 68mm	H-1	2oz. 57g	P, S	26
C91 Pacific Salt	4-15/16" 125mm	8-5/8" 219mm	3-13/16" 97mm	3-3/8" 86mm	H-1	3oz 86g	P, S	26
C89 Atlantic Salt	4-5/8" 116mm	8-3/16" 209mm	3-5/8" 93mm	3-7/16" 86mm	H-1	2.6oz 75g	P, S	26
C106 Tasman Salt	4" 102mm	6-13/16" 173mm	2-15/16" 75mm	2-1/2" 64mm	H-1	2oz 57g	P, S	27
LBK3 Lightweight	2-7/16" 62mm	4-3/8" 111mm	1-15/16" 49mm	1-11/16" 49mm	VG-10	.06oz 18g	P, S	27
LBK3 Stainless	2-7/16" 62mm	4-3/8" 111mm	1-15/16" 49mm	1-11/16" 49mm	VG-10	1.2oz 34g	P, S	27
B01 SpyderFly	6" 152mm	9-3/4" 248mm	4-1/8" 105mm	3-11/16" 94mm	440C	5.8oz 165 g	P	29
B01TR Spyderfly Trainer	6" 152mm	9-3/4" 248mm	4-1/8" 105mm	N/A	440C	5.8oz 165 g	N/A	29
B03 SzaboFly	5-1/2" 140mm	9-7/8" 251mm	4-3/8" 111mm	3-1/2" 89mm	VG-10	5.5oz 156g	P	29
FB01 Bowie	N/A	8" 203mm	3-7/8" 99mm	3-1/2" 89mm	VG-10	3oz 84g	P	31
FB02 Drop Point	N/A	8" 203mm	3-7/8" 99mm	3-3/8" 86mm	VG-10	3oz 84g	P	31
FB11 Kumo	N/A	8-3/8" 213mm	4-1/8" 105mm	3-3/4" 95mm	VG-10	3oz 86g	P	32
FB15 Street Beat	N/A	7-3/16" 183mm	3-1/2" 89mm	3-1/4" 83mm	VG-10	3.2oz 92g	P	32
FB16 Forester	N/A	15-9/16" 395mm	9-1/8" 232mm	9-1/8" 232mm	N690Co	16.8oz 456g	P	32
FB17 Forager	N/A	14" 356mm	7-1/2" 190mm	7-1/2" 190mm	N690Co	14.7oz 417g	P	33
FB18 Woodlander	N/A	12-5/8" 321mm	6-3/32" 155mm	6-3/32" 155mm	N690Co	13.4oz 380g	P	33
FB19 Dayhiker	N/A	10-1/2" 266mm	4-3/4" 121mm	4-9/16" 116mm	N690Co	7.6oz 215g	P	33
KX06S Yin	N/A	11-1/16" 280mm	6" 152mm	5-15/16" 151mm	VG-10	3.1oz 90g	S	35
KX06P Yang	N/A	11-1/16" 280mm	6" 152mm	5-15/16" 151mm	VG-10	3.1oz 90g	P	35
BY03BK Cara Cara Lightweight	4-27/32" 123mm	8-11/16" 221mm	3-7/8" 98mm	3-1/4" 83mm	8Cr13MoV	3.8 oz 109g	P,PS	53
BY04BK Meadowlark Lightweight	4-1/32" 102mm	6-15/16" 176mm	2-15/16" 75mm	2-3/8" 61mm	8Cr13MoV	2.7oz 76g	P,PS	53
BY03G Cara Cara G-10	4-3/4" 121mm	8-5/8" 219mm	3-7/8" 98mm	3-1/4" 83mm	8Cr13MoV	5.5oz 156g	P,PS	54
BY04G Meadowlark G-10	3-15/16" 100mm	6-7/8" 175mm	2-15/16" 75mm	2-7/16" 62mm	8Cr13MoV	3.4oz 97g	P,PS	54
BY03 Cara Cara Stainless Steel	4-3/4" 121mm	8-5/8" 219mm	307/8" 98mm	3-1/4" 83mm	8Cr13MoV	5.9oz. 166g	P,PS	55
BY04 Meadowlark Stainless Steel	3-15/16" 100mm	6-7/8" 175mm	2-15/16" 75mm	2-7/16" 62mm	8Cr13MoV	4.1oz 117g	P,PS	54
BY03BB Black Cara Cara SS	4-3/4" 121mm	8-5/8" 219mm	3-7/8" 98mm	3-1/4" 83mm	8Cr13MoV	5.9oz. 166g	P,PS	55
BY04BB Black Meadowlark SS	3-15/16" 100mm	6-7/8" 175mm	2-15/16" 75mm	2-7/16" 62mm	8Cr13MoV	4.1oz 117g	P,PS	55
BY10G Robin G-10	3-5/16" 84mm	5-13/16" 148mm	2-1/2" 64mm	1-7/8" 48mm	8Cr13MoV	2.5oz 72g	P,S	56
BY10 Robin Stainless Steel	3-5/16" 84mm	5-13/16" 148mm	2-1/2" 64mm	1-7/8" 48mm	8Cr13MoV	3.1oz 88g	P,S	56
BY11BK Finch Lightweight	2-9/16" 65mm	4-7/16" 113mm	1-7/8" 48mm	1-1/2" 38mm	8Cr13MoV	0.6oz 17g	P,PS	57
BY11 Finch Stainless Steel	2-1/2" 64mm	4-3/8" 111mm	1-7/8" 48mm	1-9/16" 40mm	8Cr13MoV	1.2oz 34g	P,PS	57
BY12BK Starling Lightweight	2-7/16" 62mm	4-3/8" 111mm	1-15/16" 49mm	1-3/4" 44mm	8Cr13MoV	0.65oz 18g	P	57
BY05 Flight	4-5/8" 117mm	7-7/8" 200mm	3-7/16" 87mm	3-3/16" 81mm	8Cr13MoV	5.5oz 157g	P,PS	58
BY06Pelican	4-11/16" 119mm	7-3/4" 197mm	3-3/8" 86mm	3-1/16" 78mm	8Cr13MoV	5.6oz 158g	P,PS	58
BY07 Crossbill	4-5/8" 117mm	7-5/8" 194mm	3-1/2" 89mm	3-1/8" 79mm	8Cr13MoV	5.5 157g	P,PS	58
BY08BK Black Crow	3-7/8" 98mm	6-5/8" 168mm	2-13/16" 71mm	2-3/16" 56mm	8Cr13MoV	3.5oz 100g	P,PS	59
BY08SL Silver Crow	3-7/8" 98mm	6-5/8" 168mm	2-13/16" 71mm	2-3/16" 56mm	8Cr13MoV	3.5oz 100g	P,PS	59
BY09BK Black Raven	4-3/8" 111mm	7-7/8" 200mm	3-1/2" 89mm	2-7/8" 73mm	8Cr13MoV	4.3oz 122g	P,PS	59
BY09SL Silver Raven	4-3/8" 111mm	7-7/8" 200mm	3-1/2" 89mm	2-7/8" 73mm	8Cr13MoV	4.3oz 122g	P,PS	59
BY13 8-Tool Harp	3-3/4" 95mm	6-9/16" 167mm	N/A	N/A	N/A	4.5oz 128g	N/A	60
BY14 Firebyrd	3-5/8" 92mm	5-5/16" 135mm	1-11/16" 43mm	1-11/16" 43mm	8Cr13MoV	3.3oz 93g	P	60

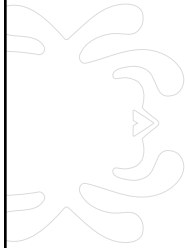
63

GSA

Contract Holder

FSS Contract GS-07F-9342S

CPM-9V	1.78	5.25	--	--	--	--	--	1.30	--	--	--	--	--	--	--	--	--	--	--	--	--	--	--	9.00
CPM-M4	1.40	4.00	--	--	--	0.30	5.25	--	--	--	--	--	0.55	0.06	--	5.50	--	4.00	--	--	--	--	--	4.00
CPM-530V	1.45	14.00	--	--	--	--	2.00	0.20	--	--	--	--	--	--	--	--	--	4.00	--	--	--	--	--	4.00
CPM-560V(440V)	2.15	17.00	--	--	--	0.40	0.40	--	--	--	--	--	0.40	--	--	--	--	5.50	--	--	--	--	--	5.50
CPM-590V(420V)	2.30	14.00	--	--	--	--	1.00	--	--	--	--	--	--	--	--	--	--	9.00	--	--	--	--	--	9.00
D-2	1.55	11.50	--	--	--	--	0.90	--	--	--	--	--	--	--	--	--	--	0.80	--	--	--	--	--	0.80
GIN-1	0.90	15.50	--	--	--	0.60	0.30	--	--	0.02	0.03	0.37	0.03	--	--	--	--	--	--	--	--	--	--	--
H-1	0.15	14.00-16.00	--	--	--	2.0	0.50-1.50	0.10	0.04	0.04	3.00-4.50	0.03	--	--	--	--	--	--	--	--	--	--	--	--
Hitachi Blue Super Steel	1.40-1.50	0.30-0.50	--	--	--	0.20-0.30	0.30-0.50	--	0.03	0.03	0.10-0.20	0.00	2.00-2.50	0.50	--	--	--	--	--	--	--	--	--	0.50
M-2	1.00	4.15	--	--	--	--	5.00	--	--	--	--	--	6.40	1.95	--	--	--	--	--	--	--	--	--	1.95
MBS-26	0.85-1.00	13.00-15.00	--	--	--	0.30-0.60	0.15-0.25	--	0.04	0.04	0.65	0.01	--	--	--	--	--	--	--	--	--	--	--	--
MRS-30	1.12	14.00	--	--	--	0.50	0.60	--	--	--	1.00	--	--	0.25	--	--	0.25	--	--	--	--	--	--	0.25
N690Co	1.07	17.00	1.50	--	--	0.40	1.10	--	--	--	0.40	--	--	0.10	--	--	0.10	--	--	--	--	--	--	0.10
O-1	0.85-1.00	0.40-0.60	--	--	--	1.00-1.40	--	0.30	--	--	0.50	--	--	0.30	--	--	0.30	--	--	--	--	--	--	0.30
Sandvik 12C27	0.60	13.50	--	--	--	0.40	--	--	--	0.03	0.40	0.01	--	--	--	--	--	--	--	--	--	--	--	--
Sandvik 12C27 Mod.	0.52	14.50	--	--	--	0.60	--	--	0.25	0.25	0.40	0.01	--	--	--	--	--	--	--	--	--	--	--	--
Vascowear	1.12	7.75	--	--	--	0.30	1.60	--	--	--	1.20	--	--	2.40	--	--	2.40	--	--	--	--	--	--	2.40
VG-10	0.95-1.05	14.50-15.50	1.30-1.50	--	--	0.50	0.90-1.20	--	0.03	0.03	0.60	--	--	0.10-0.30	--	--	0.10-0.30	--	--	--	--	--	--	0.10-0.30
W-1	0.70-1.50	0.15	--	--	--	0.10-0.40	0.10	0.20	--	--	0.10-0.40	--	--	0.10	--	--	0.10	--	--	--	--	--	--	0.10
W-2	0.85-1.50	0.15	--	--	--	0.10-0.40	0.10	0.20	--	--	0.10-0.40	--	--	0.15	--	--	0.15	--	--	--	--	--	--	0.15-0.35
X-15TN	0.42	15.55	--	--	--	0.46	1.70	0.30	0.02	0.02	0.23	0.00	--	0.29	--	--	0.29	--	--	--	--	--	--	0.29
ZDP-189	3.00	20.00	--	--	--	--	--	--	--	--	--	--	--	--	--	--	--	--	--	--	--	--	--	--





Spyderco

820 Spyderco Way
Golden, Colorado 80403
U.S.A.

Toll Free: 800-525-7770

Local: 303-279-8383

www.spyderco.com

www.byrdknife.com

 **byrd knife**